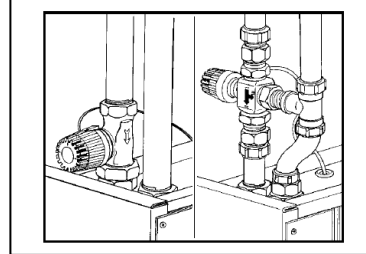


CITY AIR CURTAINS

Fitting a 2 or 3 port valve, actuator & sensor bulb into Biddle CITY air curtain

1. Isolate unit from Electrical Supply
2. Fit 2 or 3-Port valve

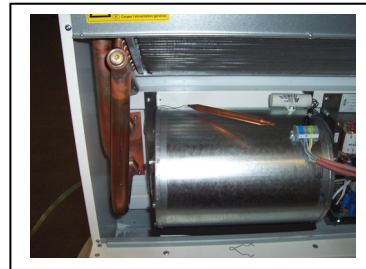


3. Remove grommet and feed sensor bulb through top of casing.

Note - It is probable that the sensor has to go through the aperture at a slight angle.

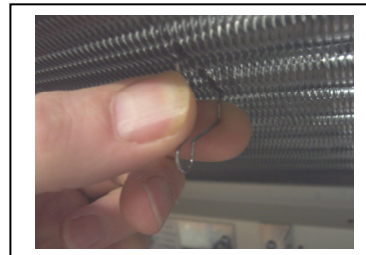


4. Remove the screws securing the access panel.
5. Remove access panel.
6. Feed sensor bulb through casing.

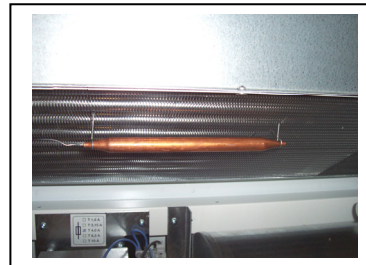


7. Using the spring clips supplied, fit one to the centre of the finned element.

Note: Fit clip between two heater tubes



8. Feed the end tip of the sensor bulb into the clip you have just fitted.
9. Fit one further clip to support the opposite end of the sensor bulb.
10. Clip the remaining capillary tube to the element, as required.



11. Adjust actuator head to desired discharge air temperature.

